

PERFORMANCE

Processor

Intel® Core™ i7-1165G7 (4C / 8T, 2.8 / 4.7GHz, 12MB)

Graphics

Integrated Intel Iris® Xe Graphics functions as UHD Graphics

Chipset

Intel SoC Platform

Memory

16GB Soldered DDR4-3200

Memory Slots

One memory soldered to systemboard, one DDR4 SO-DIMM slot, dual-channel capable

Max Memory

Up to 48GB (16GB soldered + 32GB SO-DIMM) DDR4-3200

Storage

512GB SSD M.2 2280 PCIe x4 NVMe Opal2

Storage Support

One drive, 1x M.2 2280 SSD or 1x M.2 2242 SSD

- M.2 2280 SSD up to 2TB
- M.2 2242 SSD up to 128GB

Card Reader

MicroSD Reader

Audio Chip

High Definition (HD) Audio, Realtek® ALC3287 codec

Speakers

Stereo speakers, 2W x2, Dolby® Audio™

Camera

720p + IR with Privacy Shutter

Microphone

2x, Array

Battery

Integrated 50Wh

Max Battery Life

MobileMark® 2018: 10.7 hr

JEITA 2.0: 14.5 hr

Power Adapter

65W USB-C

DESIGN

Display

14" FHD (1920x1080) IPS 500nits Anti-glare, Touch, ThinkPad® Privacy Guard

Touchscreen

10-point Multi-touch

Keyboard

Backlit, German

Case Color

Black

Surface Treatment

Not Anti-microbial

Case Material

PPS / 50% GF (Top), PC + ABS / Talc15 + Magnesium Alloy (Keyboard Cover), PA / 50% GF (Bottom)

Dimensions (WxDxH)

329 x 227 x 17.9 mm (12.95 x 8.94 x 0.70 inches)

Weight

1.58 kg (3.49 lbs)

SOFTWARE

Operating System

Windows® 10 Pro 64, German

CONNECTIVITY

Ethernet

100/1000M

WLAN + Bluetooth™

Intel AX210 11ax, 2x2 + BT5.2

WWAN

WWAN Upgradable

Standard Ports

- 1x USB 3.2 Gen 1 (Always On)
- 1x microSD card reader
- 1x Ethernet (RJ-45)
- 1x headphone / microphone combo jack (3.5mm)
- 2x Thunderbolt™ 4 / USB4™ 40Gbps (support data transfer, Power Delivery 3.0 and DisplayPort™ 1.4a)
- 1x USB 3.2 Gen 1
- 1x HDMI® 2.0
- 1x side docking connector

Optional Ports

- 1x Smart card reader
- 1x Nano-SIM card slot (WWAN models)

SECURITY & PRIVACY

Smart Card Reader

Smart Card Reader

Security Chip

Discrete TPM 2.0

Fingerprint Reader

Touch Style, Match-on-Chip

Physical Locks

Kensington® Security Slot

Other Security

- IR camera for Windows® Hello
- Camera privacy shutter
- Privacy Guard with Privacy Alert

SERVICE

Base Warranty

3-year, Depot

CERTIFICATIONS

Green Certifications

- EPEAT™ Gold
- ENERGY STAR® 8.0
- RoHS compliant
- TCO

Mil-Spec Test

Work in progress

MODEL

TopSeller : Yes

Announce Date : 2021-02-23

EAN / UPC / JAN : 0195713297424

End of Support : 2027-09-23



Premier Support - A direct 24x7x365 line to our most elite technicians.



Advanced technical support, 24x7x365, in more than 100 markets



Technical Account Managers for proactive relationship and escalation management



Comprehensive hardware & OEM software support



Priority on service delivery and repair parts



Single point of contact for simplified end-to-end case management



Lenovo Service Connect Portal for customized reporting and product support

Accidental Damage Protection - Protection of your PC from the unexpected.

Experience shows that a significant portion of devices may be damaged (and not covered under warranty) in the first three years. Lenovo's Accidental Damage Protection service covers accidents beyond the system warranty such as drops, spills, bumps and even electrical surges. Make sure your new device has maximum protection, avoid unplanned costs and get peace of mind.

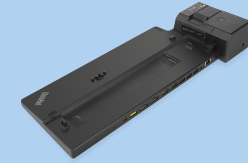
Base Warranty - Included with the systems you purchase, default 1- or 3-year coverage window.

Warranty Extensions & Upgrades - Service and protection that's right for your circumstances.

- Pick Up & Return Courier
- Onsite Support
- Technician Installed Customer
- Replaceable Unit Service
- International Warranty Upgrade

Lenovo may not offer the products, services or features discussed in this document in all regions. Lenovo may withdraw an offering at any time. Information is subject to change without notice. Consult your local representative for information on offerings available in your area. Lenovo reserves the right to change specifications or other product information without notice. Lenovo is not responsible for photographic or typographical errors. Lenovo provides this publication "as is" without warranty of any kind, either express or implied, including the implied warranties of merchantability or fitness for a particular purpose.

Recommended Accessories



ThinkPad Ultra Docking Station (American Standard Plug)

40AJ0135US

The ThinkPad Ultra Docking Station provides the best docking experience for large enterprise ThinkPad customers. The innovative side connector, designed exclusively for ThinkPad notebooks, provides a driver-free way t...

Recommended Services

| | |
|--------|---|
| BEST | 5Y Premier Support Upgrade from 3Y Depot/CCI (5WS0T36204) |
| BETTER | 4Y Premier Support Upgrade from 3Y Depot/CCI (5WS0T36185) |
| GOOD | 3Y Premier Support Upgrade from 3Y Depot/CCI (5WS0T36152) |

For a full list of accessories and services, please visit: <https://smartfind.Lenovo.com>



PSREF
Product Specifications
Reference